

SPARKLING SAGA 2024

WILD WONDERS

Blossoms of elegance

A.POOJA

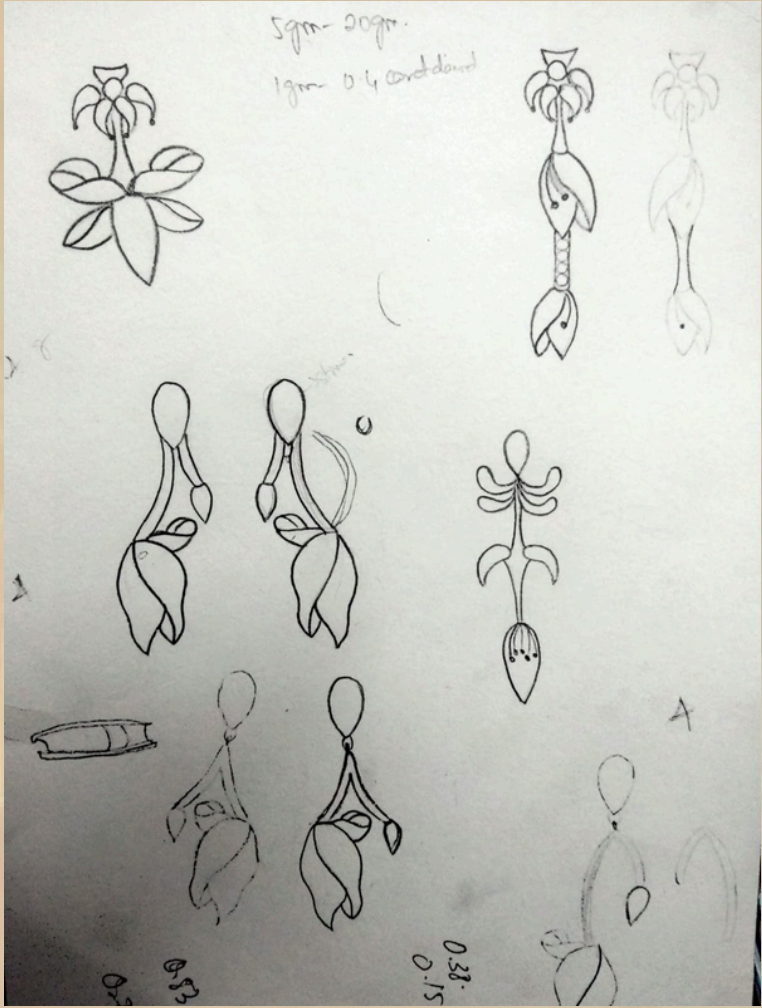
NIFT

Banana Blossoms

Inspired by the intricate beauty and structural elegance of the banana flower, this jewelry collection brings together nature's organic forms and contemporary design. The banana flower holds deep cultural significance, symbolizing fertility, prosperity, and new beginnings. Drawing from the architectural complexity of the banana flower, the collection features jewelry pieces that emulate its layered bracts, spiraling florets, and the delicate, organic flow of its natural form.



FORM GENERATIONS



MATERIAL/CLOSURE/SETTING



PEAR SHAPED RUBY



ROUND DIAMOND



18K YELLOW GOLD



CLOSURE



SETTING



FLUSH SETTING

4 grams



4 grams

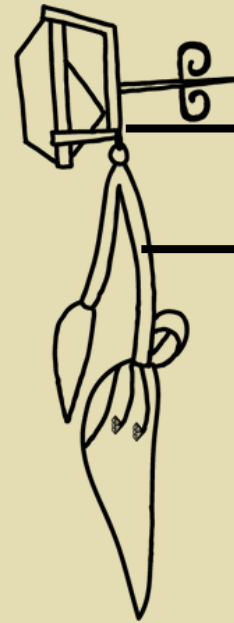


20 mm

20.5 mm

50 mm

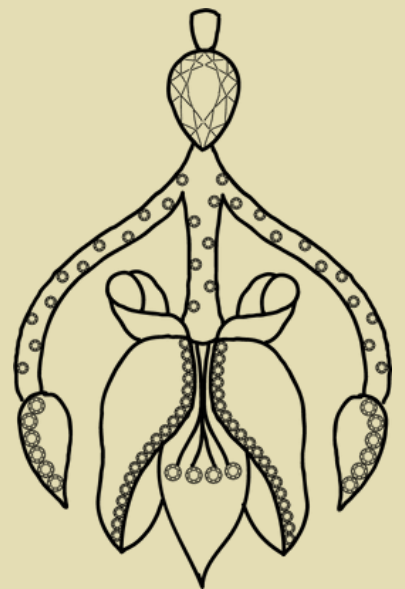
SIDE VIEW



Prong setting

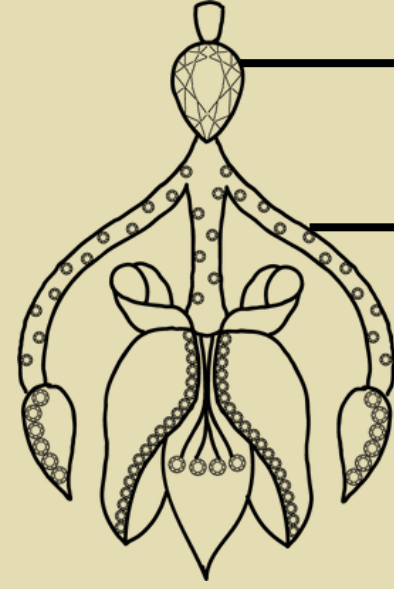
Flush setting

6 grams



23.5 mm

40.5 mm



Prong setting

Flush setting

**E
A
R
R
I
N
G

P
E
N
D
A
N
T**

SPECIFICATION SHEET

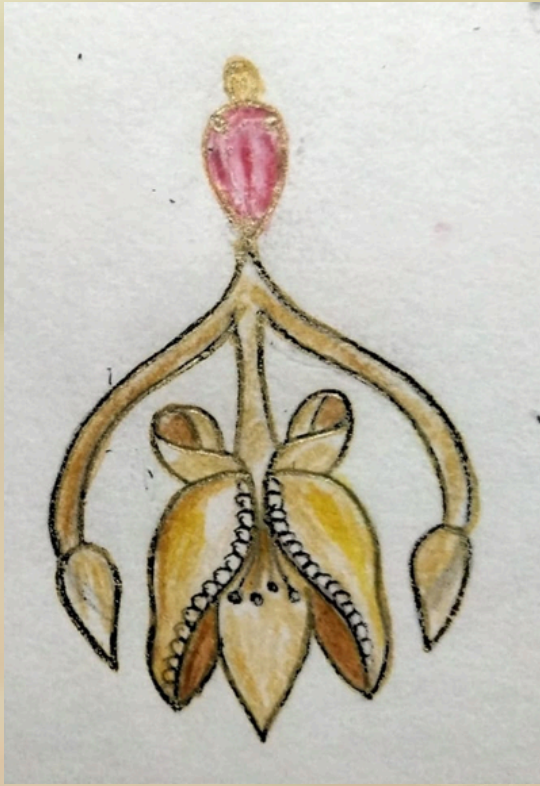
EARRING (EACH)

GOLD WEIGHT	4 GM EACH
DIAMOND (ROUND)	0.05 ct (2 mm) - 31 nos. 0.1 ct (2.6 mm) - 7 nos.
RUBY (PEAR)	3.5 ct (10 mm) - 1 nos.
TOTAL DIAMOND WEIGHT	2.25 CARAT WEIGHT

PENDANT

GOLD WEIGHT	6 GM
DIAMOND (ROUND)	0.05 ct (2 mm) - 66 nos. 0.1 ct (2.6 mm) - 16 nos.
RUBY (PEAR)	3.5 ct (10 mm) - 1 nos.
TOTAL DIAMOND WEIGHT	4.9 CARAT WEIGHT

FINAL RENDERING



BACK
HALF CUT HOLLOW

WRITE UP

The theme "Wild Wonders" honors nature's wild splendor. Banana blossoms are wild and delicate, and this jewelry piece embodies their organic, complicated structure. This piece celebrates nature's raw, unrefined beauty by showcasing its layers, patterns, and graceful lines. The banana blossom's ability to grow in the wild and its connection to abundance and fertility directly resonate with the "Wild Wonders" theme, symbolizing the untamed splendor of the natural world.

This jewelry piece is an abstraction of the banana blossom's flowing structure, capturing its organic layers and intricate textures. The pendant's and earring's centerpiece resembles the layered petals of the blossom, flaring outwards to create a sense of movement and growth. The addition of a ruby stone enhances the design, symbolizing the rich, deep red hue of the banana flower. The choice of ruby is significant, as it not only mirrors the bold color of the flower but also evokes a sense of power and vitality, much like the women this piece is designed for.

This jewelry piece is crafted for women who embrace bold, statement pieces, showcasing their individuality and confidence. Designed to make an impression, it draws inspiration from the banana blossom, a symbol that resonates deeply with the essence of womanhood. Just as the banana flower unfolds its layered beauty, women possess a multifaceted nature—strong yet graceful, resilient yet delicate.